



Common pacemaker problems and resolutions

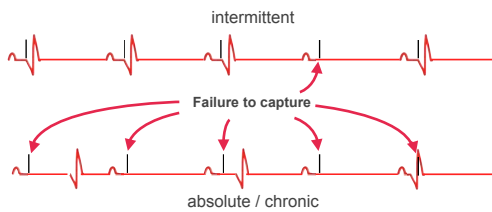
Failure to capture

Failure to capture

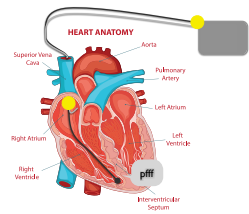


The output pulse from the pacemaker fails to make the target chamber depolarize.

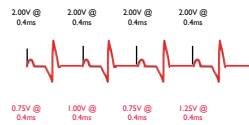
A ventricular example



On an ECG & electrogram

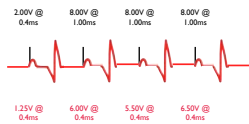


Safety margin



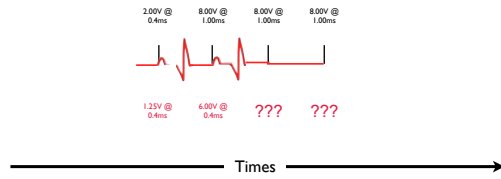
Time →

Added safety



Times →

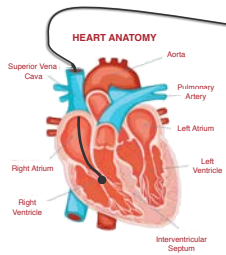
Loss of capture



The Bigger problems

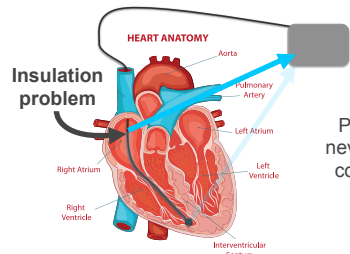


- Lead displacement
- Lead insulation break
- Lead fracture



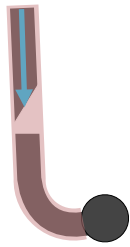
Pulse output
never arrives at
correct tissue

Lead displacement



Pulse output never arrives at correct tissue

Insulation breaks



Pulse output never arrives at correct tissue

Lead fracture

Takeaway message



If you are seeing failure to capture then it suggests a **serious problem** that may require the lead to be **replaced** or **repositioned**.
